

Community Action Team



Chairman
Cllr Chris Wood



FAREHAM
BOROUGH COUNCIL

IFA2 Planning Application Introduction

Councillor Seán Woodward
Executive Leader
Fareham Borough Council



Matters to cover...

- Background & Recent Planning History
- Reserved Matter Applications:
 - Converter Station
 - Public Open Space
- Planning Considerations
- Public Consultation
- What happens next

IFA2

Background

- IFA2 (Interconnexion France-Angleterre 2)
- Electricity interconnector
- Connect electricity transmission systems of UK and France
- Share power



Recent Planning History

- March 2016
- Hybrid Planning application:
- Site extends to Chilling as well as Daedalus and Hill Head
 - Cables fully detailed
 - Converter Station in outline only
 - Open Space in outline only
- On shore elements only



Recent Planning History

- 23 January 2017 - Special Planning Committee:
 - Recommended for permission to be granted
 - Resolution to grant permission
- 27 January 2017 - Marine Management Organisation issue Marine Licence



Recent Planning History

- 10 April 2017 - Necessary section 106 agreement completed
- 10 April 2017 - Outline Planning Permission issued
- 26 July 2017 – Reserved Matters planning applications submitted



Reserved Matters

- “Reserved Matters”:
- Details not permitted by the grant of the Outline Planning Permission
- Split across two parts of the site:
 - Converter Station
 - Public Open Space



Converter Station

- 60% Reduction in volume of the buildings
- 24% reduction in footprint of the buildings
- Maximum height of 19.94m
- Was 22m in Outline Planning Application

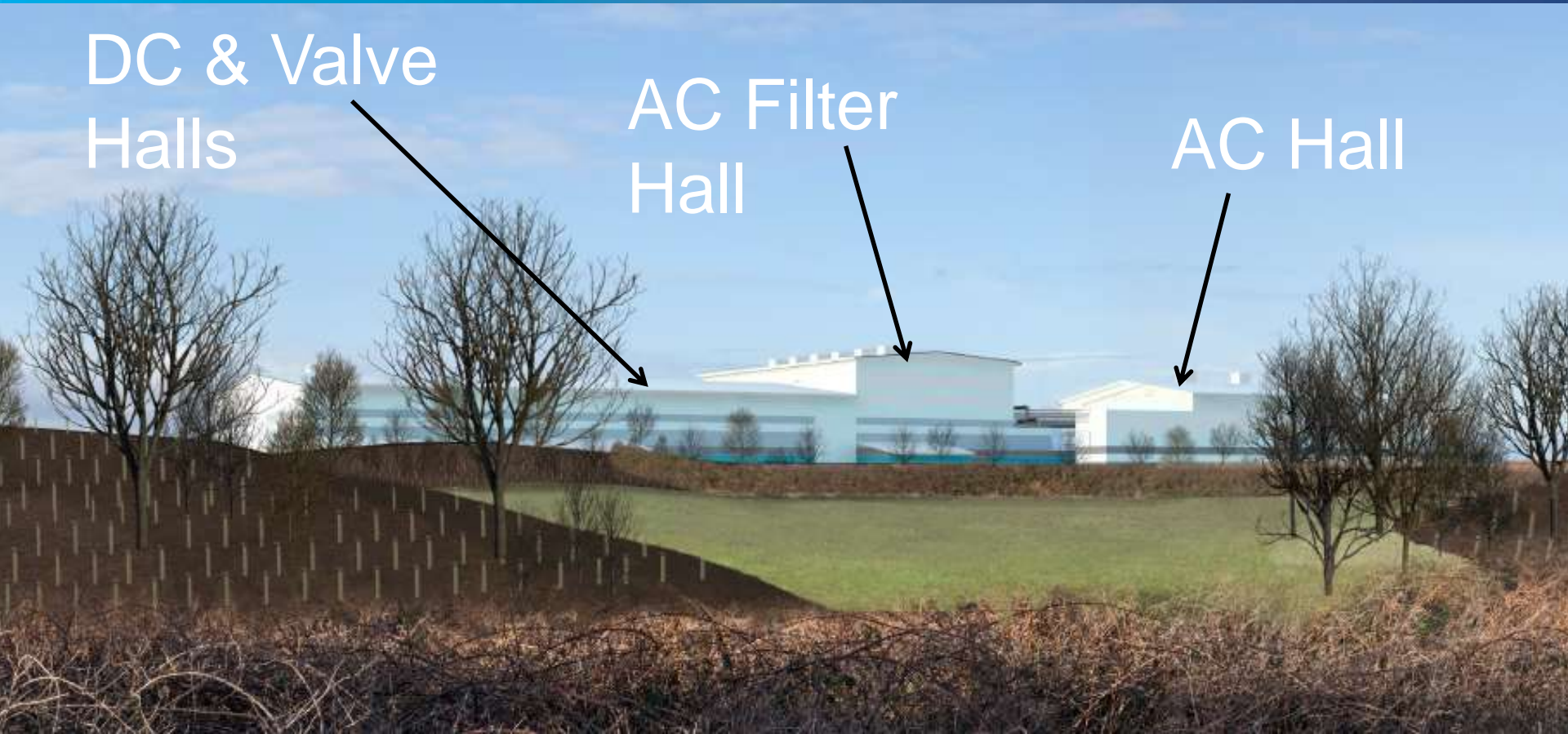


Converter Station Design

DC & Valve
Halls

AC Filter
Hall

AC Hall



Outline
Planning
Permission
Design



Current,
Reserved
Matters
Design

Converter Station:

Reserved Matters

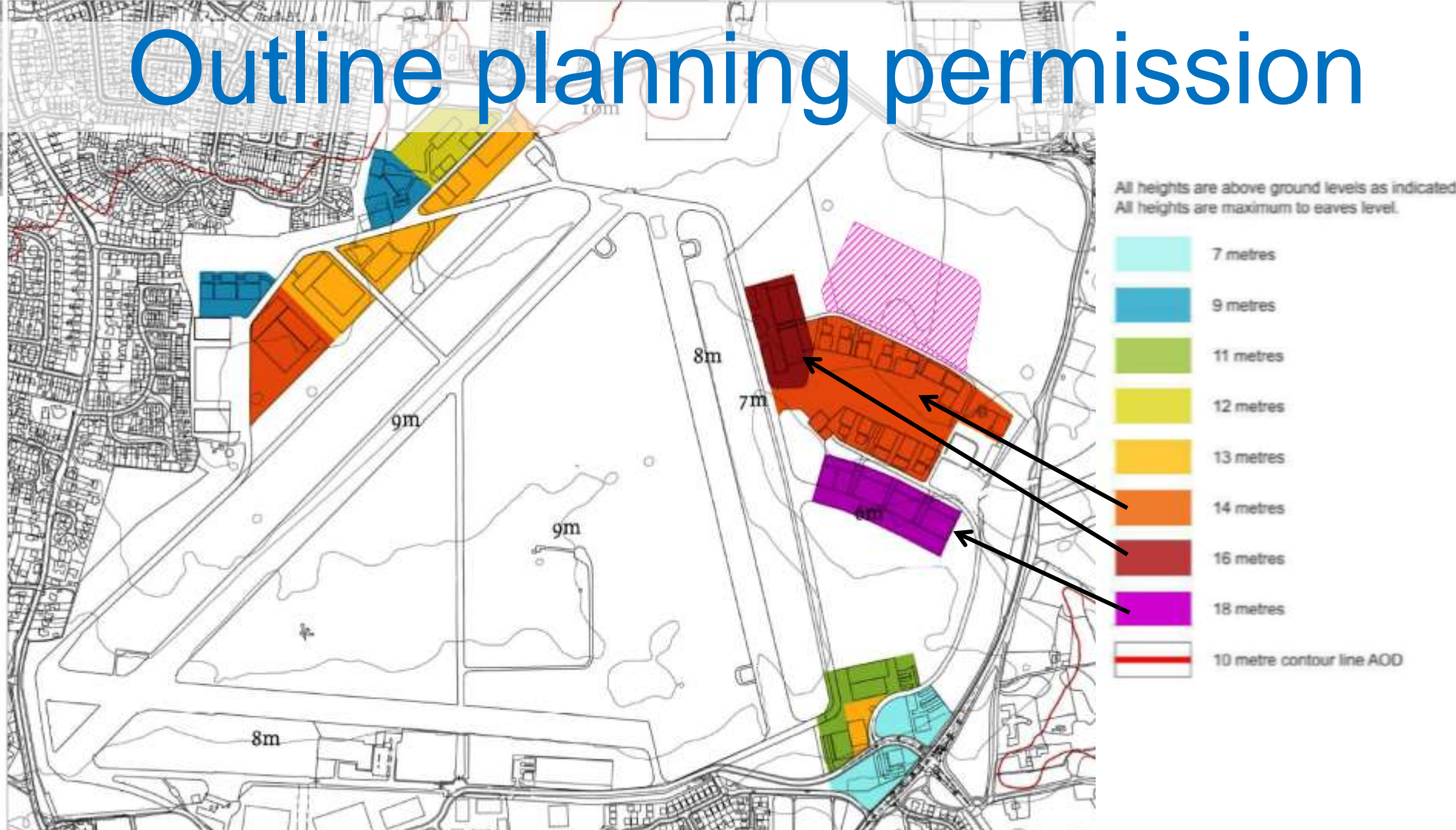
Vs

Outline Planning Permission

Proposed Heights of Main Converter Station Buildings Compared with Outline Planning Application

| Main Converter Station Buildings | Ridge/ Ventilation Stack | Outline Application Design Height | Reserved Matters Design Height | Proposed Reduction in Height |
|----------------------------------|--------------------------------|---|--------------------------------------|------------------------------------|
| AC Filter Hall | Ridge | 22.0m | 18.94m | - 3.06m |
| | Vent stacks (6 nr) | | 19.94m | - 2.06m |
| DC and Valve Halls | Ridge | 22.0m | 15.6m | - 6.4m |
| | Vent stacks (2 nr) | | 16.8m | - 5.2m |
| AC Hall | Ridge | 22.0m | 17.2m | - 4.8m |
| | Vent stacks (3 nr) | | 18.8m | - 3.2m |

Outline planning permission



Public Open Space

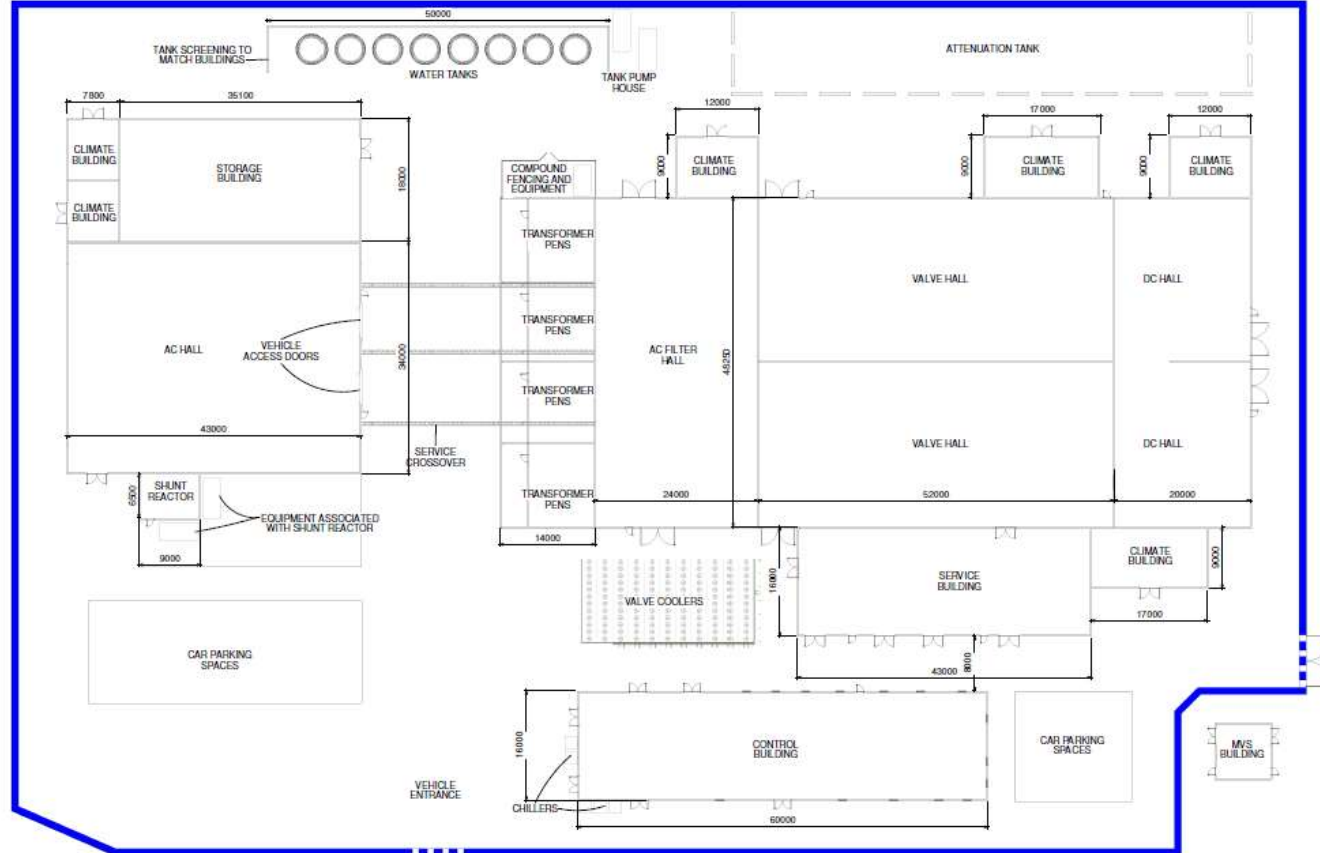
To include:

- Play area
- Free car parking
- Dog walking area
- Way markers
- Benches and bins
- Network of paths
- Runway vantage points



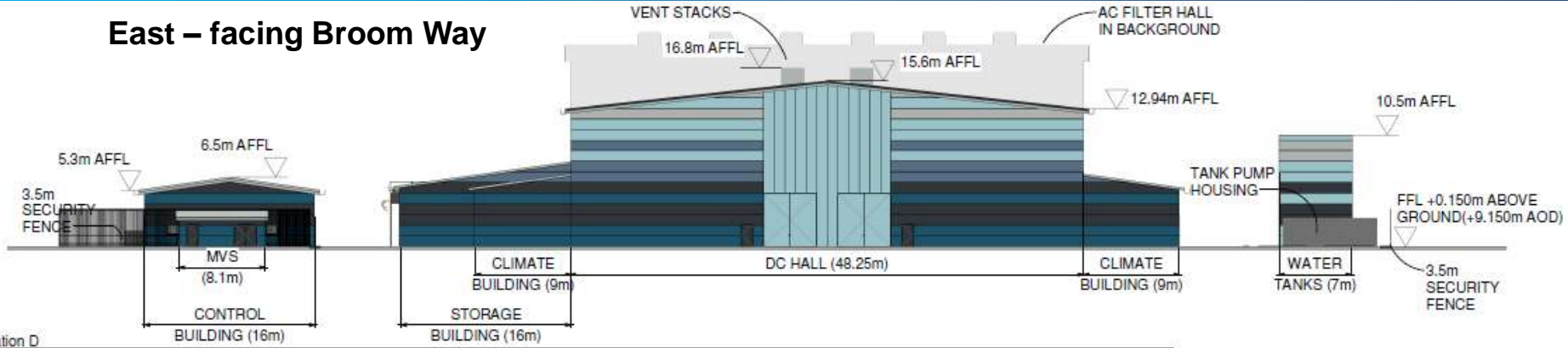
Mark Wyatt
Principal Planner Strategic Sites
(Development Management)

Converter Station Layout



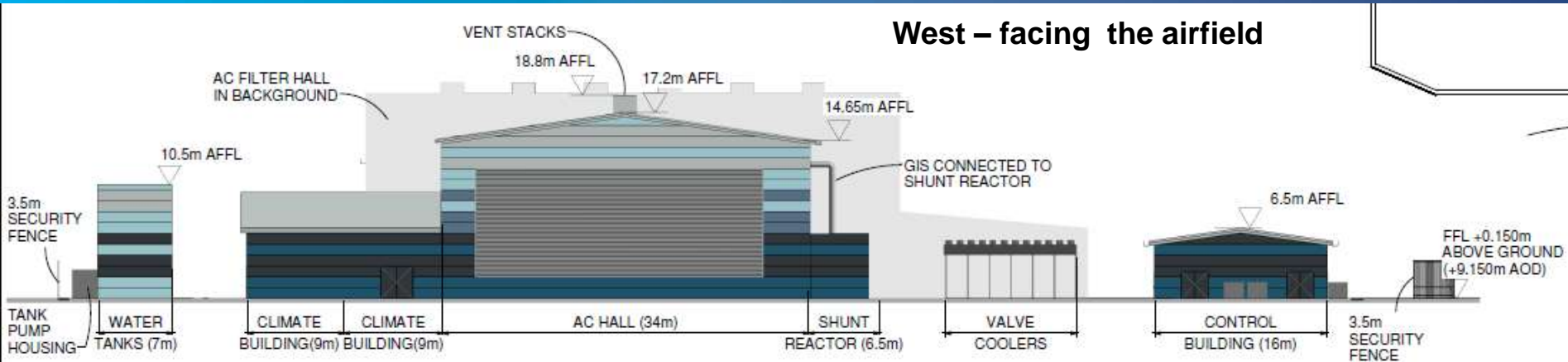
Converter Station

East – facing Broom Way



Elevation D
Scale: 1:200

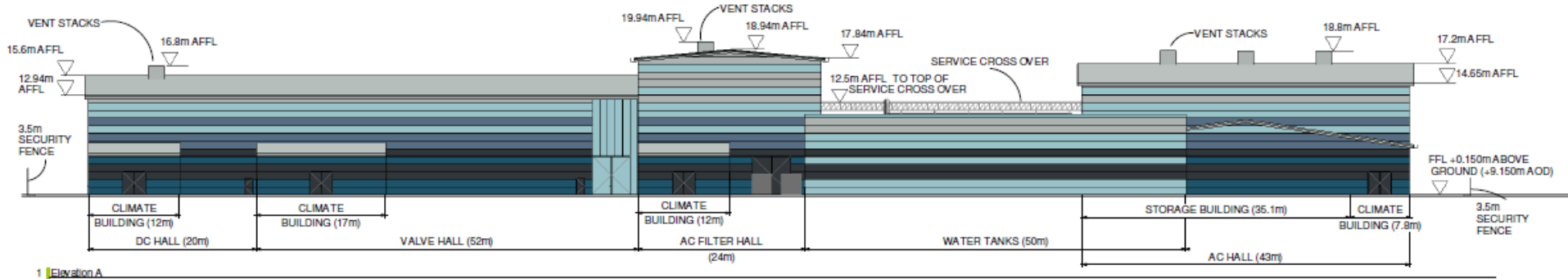
West – facing the airfield



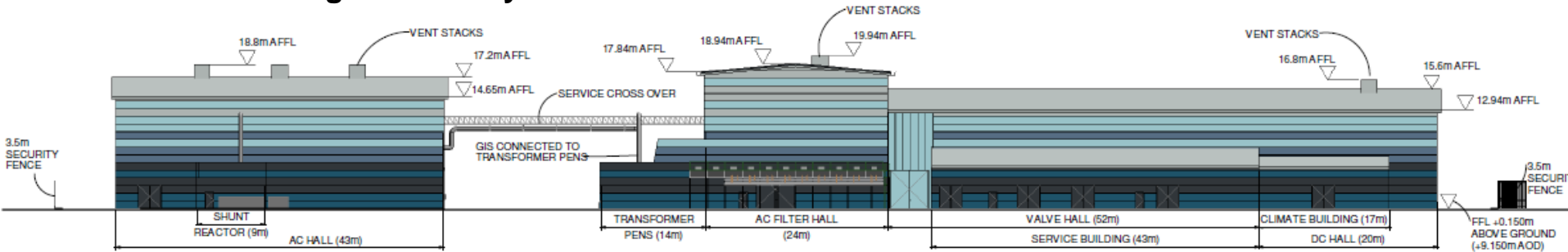
Elevation E

Converter Station

North – facing the open space



South – facing Vulcan Way



View from the north

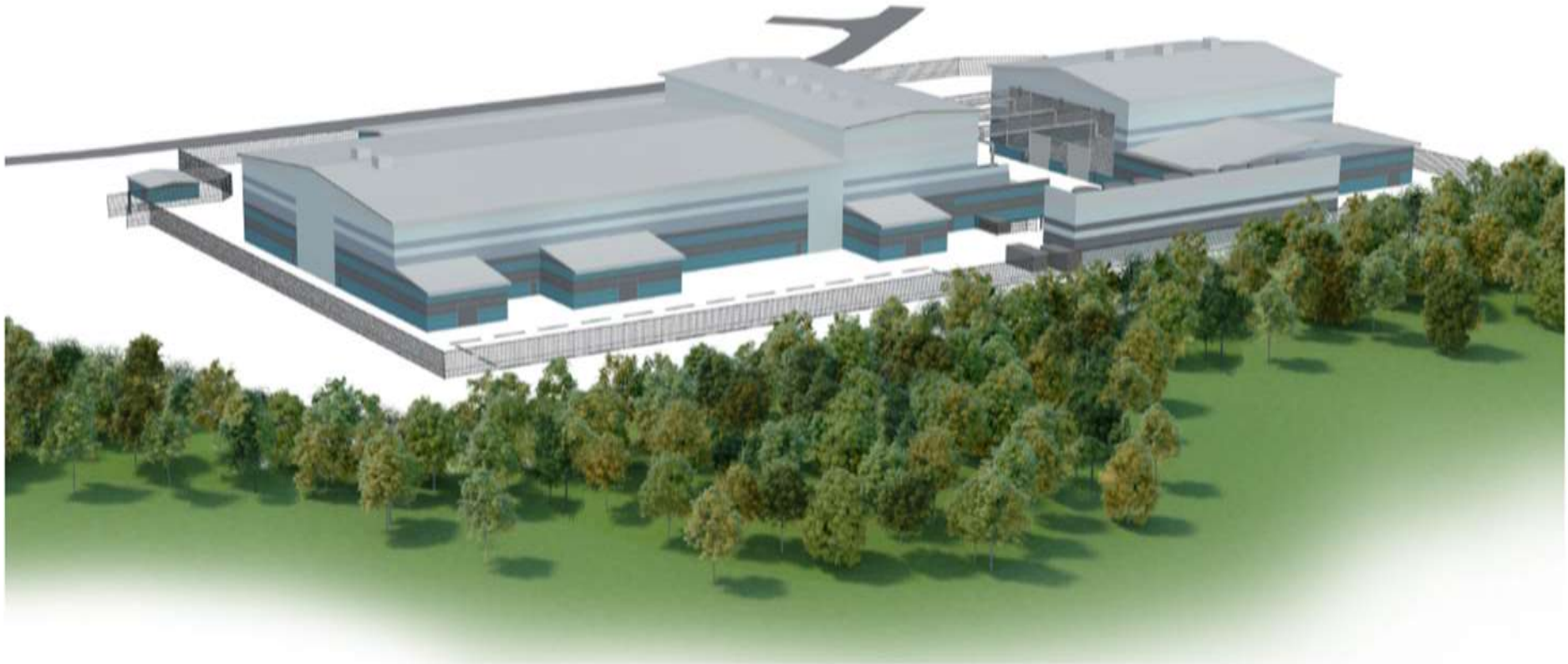


Showing mitigation mounding in future open space (at Daedalus North) in conjunction with the Converter Station buildings



Showing mitigation planting and mounding in future open space (at Daedalus North) in conjunction with the Converter Station buildings

Bird's eye view from Peel Common Roundabout



Year 0 with mitigating planting



Proposals on completion (at 0 years) with additional mitigation (mounding and planting)
Anticipated view looking south from the Peel Common Roundabout

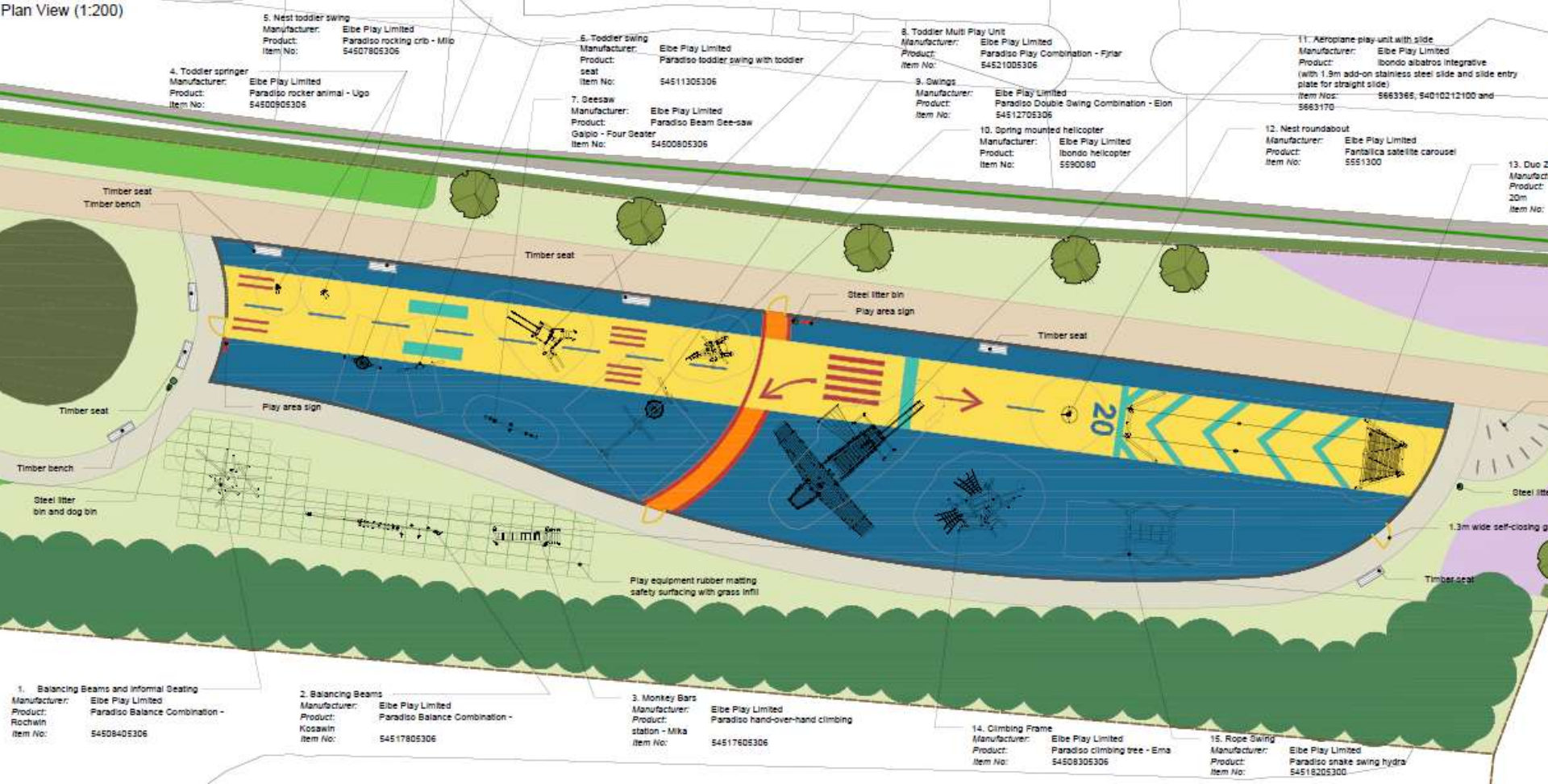
Year 15 with mitigating planting



Proposals with additional mitigation (mounding and planting) at year 15
Anticipated view looking south from the Peel Common Roundabout

Children's Play Area

Plan View (1:200)



Children's Play Area

Different types of play equipment

Aviation related theming

Located close to existing settlement





Central Open Space



Eastern Open Space

Planning Considerations

We can't take into account:

- The principle of development
- Site selection
- Maximum building heights and footprint



Planning Considerations

We can take into account:

- Access – construction & operational, parking areas
- Landscaping – detailed specification, quantum, species
- Includes hard landscaping – benches, bins, fences, paths



Planning Considerations

We can take into account:

- Scale - of the buildings
- Appearance – of the buildings and the open space / play area, footpath network
- Siting / layout – of features in the open space, siting of the buildings
- (compared to outline parameters)



Planning Conditions

- Need to assess matters such as:
 - Noise
 - RFI
 - Aircraft Impacts
- FBC will take specialist advice on the detail



Public Consultation

- Fareham will consult a number of statutory bodies and others as per the outline permission



Public Consultation

- letters are to be sent (4,800 sent for the outline application) imminently
- Press notice
- Social Media
- Site notices for each application



Public Consultation

- Comments up to Friday 8th September 2017
- Online:
 - www.fareham.gov.uk/planning
 - Converter Station:
 - P/17/0835/RM
 - Open Space:
 - P/17/0834/RM



Public Consultation

- Email or write:
 - devcontrol@fareham.gov.uk
 - Fareham Borough Council
Civic Offices,
Civic Way,
Fareham,
PO16 7AZ



FAREHAM
BOROUGH COUNCIL

What next?

- Public chance to comment
- Consideration of comments
- Planning application likely to be decided by the Planning Committee in the Autumn



What next?

- Comment Online:
 - www.fareham.gov.uk/planning
 - Converter Station:
 - P/17/0835/RM
 - Open Space:
 - P/17/0834/RM
- Email or write:
 - Devcontrol@fareham.gov.uk
 - Fareham Borough Council
Civic Offices,
Civic Way,
Fareham,
PO16 7AZ
- Aim to submit Comments by Friday 8th September 2017