

Spring 2015

Fareham TODAY

Warsash Common

Welborne update

Your guide to what's on

A swimmer in a pool, wearing a white swim cap and goggles, with arms raised in a freestyle stroke. The water is blue and bubbly. A colorful lane line is visible on the right side of the pool.

YOUR NEW
LEISURE
CENTRE
IS COMING

FAREHAM
BOROUGH COUNCIL

A message from the Executive Leader of Fareham Borough Council, Councillor Seán Woodward

There are lots of exciting things happening in the Borough this year. You may have heard by now that there are plans for a £7m leisure centre with a six lane 25 metre swimming pool in the Western Wards. We are going to be very busy planning for this, ready for it to open in 2016. This has been in the pipeline for many years and will be a welcome addition to the Western Wards. It will be constructed at Coldeast Hospital, Sarisbury, see pages 4–5 to look at the designs and find out more.

It is important that Fareham maintains a balanced housing market. That's why we have made it a priority to deliver 500 more affordable homes by 2017. This will include older persons' flats and Passivhaus homes, which are energy efficient. Six such homes are planned to be built in Allotment Road, Sarisbury.

The new Collingwood Court is also due to open this year. Not only has it had a complete redevelopment, it has also been renamed. The new state of the art building for over 55's will help to meet the needs of the growing population of elderly people in the Borough.

Back in the autumn, Government Planning Inspector, David Hogger, held examination hearings on the plans and policies for future development in the Borough to provide much needed homes and jobs. It is worth noting that it is now necessary, due to increasing life expectancy, to plan to house three generations rather than two, which increases the need for extra homes still further. There will be a special edition of Fareham Today dedicated to the plans, including Welborne, in the summer with more information.

As always, I welcome any questions or ideas from residents on how we can continue to improve the Borough that we all share, so please don't hesitate to contact me. I look forward to hearing from you.



Seán Woodward

Fareham Borough Council

Civic Offices

Civic Way

Fareham

Hampshire PO16 7AZ

www.fareham.gov.uk

An audio version of this magazine is available on

www.fareham.gov.uk/farehamtoday

Follow us on Twitter 

@FarehamBC

Like our Facebook page 

www.facebook.com/farehambc

Editor: Lorna Tipper, 01329 824302
publicity@fareham.gov.uk

Design: www.parkcorner.com

Print: Holbrooks Printers, 023 9266 1485

All information in this issue is correct at time of going to press.

© Fareham Borough Council



12



4



15

- 4 Making a splash – Western Wards Leisure Centre and Pool
- 6 Business – A Locks Heath wine shop
- 7 Meet our tree team
- 8 Events for your diary
- 10 Housing in the Borough
- 11 Farelets
- 12 Parks
- 14 Welborne update
- 15 Love food hate waste
- 16 Have your say
- 17 Community Trigger
- 18 Walk – a poetic wander in Warsash
- 20 Dog fouling
- 21 What's on at Ferneham Hall
- 22 Your councillors



8



7



6



10



18



14



21



Our plans to build a brand new leisure centre with a swimming pool on the site of the old Coldeast Hospital (off Barnes Lane, Sarisbury Green) have recently been approved by the Planning Committee. This is an important step towards building the new £7m centre which will include:

- 25 metre pool with 6 swimming lanes
- Learner pool
- Gym with 100 pieces of equipment
- Cycle spinning studio
- Dance studio



Leisure Centre plans going swimmingly



A centre designed for you

Many residents have told us that a new leisure centre and pool is needed and we want to make sure that the centre meets everyone's needs. That is why we consulted with residents and local community groups about our plans last autumn.

Hundreds of people viewed our designs at public exhibitions and a well-attended CAT meeting. The responses we received were overwhelmingly positive and some of your comments resulted in small changes to the plans.

More than just a leisure centre

It's not only the Leisure Centre to get excited about as we are transforming the whole of the site into the local destination of choice for people and families looking for fun and healthy activities.

Kicking off

There has been a longstanding need for more football pitches in the

Western Wards. We have consulted with local junior football clubs and agreed that two football pitches, one full size and a smaller one for juniors, on the site will offer the most flexibility and meet the needs of local clubs and residents.

A separate outdoor multi-sports games area will provide a dedicated all weather play surface for a range of sports including football, basketball and netball.

Time for play

Helping to bring youth back to nature, a brand new wood themed play area for children will also be provided. This will be unique, taking inspiration from its surroundings. The play area will provide exciting and challenging play opportunities for all children, including tunnels, slides and tree houses!

We will consult with local residents and schools to seek their ideas and suggestions on the type of equipment they would like to have included in the play area.

Conservation improvements

The private woodland and fields on the site have now been handed over to the Council. Our Countryside Service, with help from some dedicated volunteers, is working to conserve much of the land surrounding the Leisure Centre, making it more habitable to the diverse range of wildlife that call the old Coldeast site their home.

We want people to enjoy these natural surroundings and will put in place signed walks and display boards offering information on the local wildlife, as well as litter and dog mess bins.

Cemetery

There will also be a new cemetery on site, to meet the need for more spaces in the Western Wards.

What next?

Spring 2015: Start construction

Spring/Summer 2016: Open the Leisure Centre and cemetery

FOCUS ON



ALEXANDER HADLEIGH WINE MERCHANTS

Alexander Hadleigh Wine Merchants in Locks Heath is an independent shop which has been around for over 40 years. It has been referred to as the 'Aladdin's Cave of Drinks' and we could certainly see why when we went to visit Del Taylor and her extensive range of alcoholic beverages!



How long has your business been around for?

I started in 1983 by door knocking on restaurants and hotels selling bottles of wine. In 2000 I decided that I wanted a wine shop and I've been here for 15 years now.

What types of customers do you get in?

We have people looking for gifts, those looking for that special liqueur or drink they have had on holiday and people who are really into wines. Then there are those who don't really know what they are looking for! We try to cater for all budgets and tastes and we have a huge range of wines, liqueurs and spirits from around the world. Internet business is good too and we deliver all around the UK and parts of Europe. We also supply to hotels and restaurants.

One thing I should say is that we are strict on asking customers for I.D though (if you are lucky enough to look under 25!)

What is your most popular wine and do you sell any local tipples?

We have wines which sell well, but there are so many different people that come in; it just depends on what they like. I can recommend wines to people once I get talking to them.

We do have some wines from the vineyard in Wickham but they have been taken over by another company and don't sell to us now, so I'm on the look-out for some new local vineyards!

It's not just wine that you have, what else do you sell?

We started with only a few wines and spirits but now we have malt whisky, rum, gin, vodka, sherry, port and liqueurs. People say we are like a mini Harrods, without the prices! We also do hampers including sweets, biscuits, chutneys and pâtés.

Do you hold any events?

We run a wine club, which also acts like a loyalty card. Members get discounts and are invited to tasters. Taster events are held on Friday nights every few months at the shop, and people can just turn up. We have also held taster sessions in the shopping centre and plan to do more throughout the year.

19 Centre Way, Locks Heath Retail Centre SO31 6DX

www.ahadleigh-wine.com

www.facebook.com/AlexanderHadleighWines

Opening times: 9am – 6pm, Monday – Saturday

Let's talk trees!

Our **Tree Team** is responsible for maintaining thousands of trees on more than 250 hectares of public open space and residential areas. The service is divided into three key areas; protected trees, trees and development and the management of Council trees.

In March 2012 the Tree Strategy 2012 – 2017 was adopted for the planning and management of the Borough's trees. The aim of the strategy is to protect and enhance our trees and woodlands and to recognise their contribution towards the character and appearance of the Borough.

Protected Trees

Where appropriate the Council uses tree preservation orders [TPOs] to protect important and prominent trees that benefit the public. We are responsible for administering 542 TPOs throughout the Borough including individual trees, tree groups and woodlands.

Before carrying out any pruning works on a tree, it is important to check its status as it may be protected by law. The Tree Team offer free pre-application advice to tree owners and contractors, including a site visit if required. Details on TPOs are available through our online TPO Register and Local View mapping service. Our 'Trees' web pages are a useful resource too and contain information about many aspects relating to trees.

Trees and Development

As a local planning authority we are responsible for planning and development. When a planning application is made for new development we have to make sure important trees nearby or on the site are protected. It is also important to us that new developments include enough landscaping and tree planting to keep the Borough's character.



Tree sculpture at Holly Hill

Council Trees

We are responsible for inspecting and maintaining trees in parks, open spaces, greenways, woodlands, cemeteries, allotments and car parks. Trees on highway verges, next to roads, are normally the responsibility of Hampshire County Council.

Our trees are regularly inspected and maintained to ensure they are safe and healthy. Occasionally trees can become a source of frustration due to falling debris and shading for example. We aim to consider householders' needs and balance those requirements with the value and importance of trees and the many benefits they provide our communities. Our tree officers are happy to meet on site to discuss your concerns personally.



7 year old, Luca Blake, helps plant a new tree

Planting

One of the exciting aspects of our Tree Team's work is planting new trees, which we have to do every year. Trees take decades to mature and the planting we do now will provide for future generations and maintain our green and pleasant surroundings.

One of the more high profile new trees planted last year was a Liquid Amber at Westbury Manor Museum gardens to mark 30 years of twinning with Pulheim, Germany. We planted 141 trees in December last year, which included 11 trees adopted by local communities, 50 trees to replace those felled in the past twelve months, 29 trees to replace those lost in the 2013/2014 winter storms and 51 trees planted on new sites in our proactive planting plan.

Community Engagement

In recent years some of you may have noticed several beautiful tree sculptures in Holly Hill Woodland Park, Bells Lane, Stubbington and Blackbrook Park in Fareham. These were commissioned by ward Councillors and involved local school children who produced designs for the wood carver to interpret. We chose prominent trees that would otherwise have been removed due to disease or storm damage.



The Liquid Amber Tree at Westbury Manor Museum

Our tree team can offer advice on a range of things – from tree maintenance, pests and diseases, tree preservation orders, trees in conservation areas and choosing an arborist. You can contact the Tree Team on **01329 236100 ext. 4442** or e-mail **trees@fareham.gov.uk**

Events for your diary

You can view details of these and other events taking place in Fareham Borough by visiting our 'What's On' page at www.fareham.gov.uk/whats_on

*Free event



REGULAR

First Sunday of the month, 10am

Countryside Conservation*

Help with woodland and grassland management at Warsash Common, New Road entrance.

Ages 18+

Contact the Countryside Service

Mondays weekly, 9am – 3pm

Traditional Market*

In the pedestrian area of West Street, Fareham.

First Saturday of the month, 9am – 2pm

Fareham Farmers' Market*

In the pedestrian area of West Street, Fareham.

Last Saturday of each month, 9am – 3pm

Fareham Country Market*

In the pedestrian area of West Street, Fareham.

For full details of:

Town centre events, visit

www.farehamtowncentre.co.uk

The Mayor's events, contact Mayor, Councillor David Norris

dnorris@fareham.gov.uk

02392 614257

Countryside Service

conservation@fareham.gov.uk

01329 824843

Ferneham Hall, Osborn Road, Fareham, PO16 7DB

01329 231942

MARCH

Monday 16 March, 9am – 4pm

Wild Flower Seed Launch*

Free wild flower seed give away, in Fareham Shopping Centre, to mark 20 years of Fareham in Bloom.

Thursday 23, April 10am - 2.30pm

Willow Weaving Workshop

Make a beautiful willow obelisk to support your runner beans or decorate the garden. United Reformed Church, Osborn Road South, Fareham. Age 16+, Tickets £12, from the Countryside Service

Friday 27 March, 7pm for 7.30pm

The Mayor of Fareham's Charity Ball

Dancing to Utopia Dance Band, at Ferneham Hall, in support of the Mayor's Charities. Tickets £45, from the Mayor, Councillor David Norris.

Saturday 28 March, 12pm – 4pm

The Great Easter Eggstravaganza

Robin Hood themed event in Holly Hill Woodland Park in Sarisbury Green. Tickets £6, from Fareham's Ferneham Hall.

APRIL

Various dates and venues

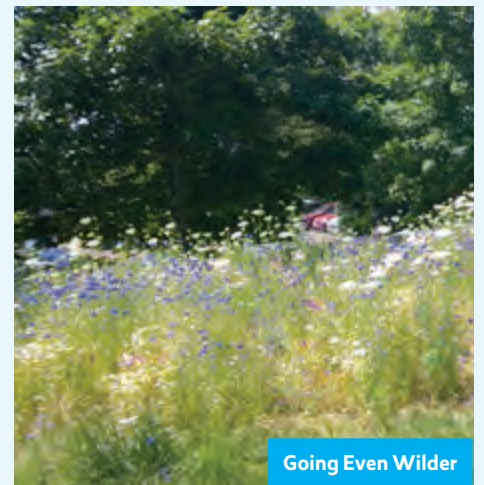
Music Month 2015

Across Fareham town centre. From buskers to bands, classical to folk, there will be a whole range of musicians and styles to suit all tastes. Visit www.farehamtowncentre.co.uk/events to see the full programme of events.

Thursday 9 April, 1pm start

Going Even Wilder*

Learn how to create the perfect meadow with this practical workshop at Hillson Drive Open Space, North Fareham.





Fareham Farmers' Market

MAY

Saturday 2 May, 9am – 3pm

Craft and Gift Fair*

In the pedestrian area of West Street, alongside our Farmers' Market, local traders will sell a range of crafts and gifts.

Saturday 9 May, 9am – 3pm

Gardeners' Fair*

In the pedestrian area of West Street. Up to 30 local horticultural businesses and community groups will sell and showcase everything you need to enhance your garden this season.

Saturday 16 May, drop in sessions between 10am – 1pm

Hanging Gardens Workshop*

Create the perfect basket or container at St Margaret's Nurseries, St Margaret's Lane, Titchfield. Free Fuchsia for the first 100 visitors.

Thursday 28 May, 10am – 12pm

Nature Detectives

Various outdoor activities for 5 – 12 yrs at Coldeast. Tickets £5, from the Countryside Service.

JUNE

Saturday 13 June, 9am – 3pm

Gardeners' Fair*

In the pedestrian area of West Street. Up to 30 local horticultural businesses and community groups will sell and showcase everything you need to enhance your garden this season.

Fareham Leisure Card – have you got yours yet?

Fareham Leisure Card offers discounts of **between 5% and 50%** on a whole range of leisure activities, now from **47 outlets in and around Fareham**.

Joining the Fareham Leisure Card scheme couldn't be easier, simply pick up a leaflet and application form from either Fareham Leisure Centre or Ferneham Hall.

The cards last for a year and cost just £7.20 per person, £17.00 for a family membership, £5.15 for a student card or free to some residents on a low income. (Please see the Terms and Conditions on the back of the application form).

For more information about the Fareham Leisure Card or if your company would like to be part of the scheme and offer discounts, please contact the Leisure Card Officer, **01329 824894**.

You can use your Fareham Leisure Card at:

- | | |
|--|----------------------------------|
| Abshot Landscape Maintenance – NEW | Life Coach and Mentoring |
| Airzone Kitesurf School | Lucketts Travel |
| Alexandra Sports | Manor Farm Country Park |
| Ambush Paintball and Lasertag | Motag Motorcycle Training |
| Amnesia The Hair Fitness Centre | Naz Indian Cuisine |
| Andark Diving & Water Sports | New Forest Activities |
| Blue Reef Aquarium | No+Vello Fareham – NEW |
| Body Fusion On-form Sports Injury Clinic | Passion Flower Florists |
| British School of Ballooning – NEW | Phoenix Driver Training |
| Compass Trailers | Razzamatazz |
| Crofton Shotokan School of Karate | Royal Victoria Railway |
| Cuts and Clobber | SelClene Fareham and Southampton |
| Debut Hair | Solent Cycles |
| Explosion, Museum of Naval Firepower – NEW | St Margaret's Nurseries |
| Fareham Health and Beauty | Team Sport Indoor Karting |
| Fareham Leisure Centre | The Brewpot |
| Fareham Snooker Club – NEW | The Diving Museum |
| Ferneham Hall | The Healing Sanctuary |
| Gleneagles Riding School | The Royal Navy Submarine Museum |
| Gosport Horse-Drawn Carriages | The Spirit Within Hypnotherapy |
| Hargroves Cycles | Titchfield Haven Nature Reserve |
| Kitchen World Fareham Ltd, CHIC Kitchens, Bedrooms and Bathrooms – NEW | Traditional Fish and Chips |
| LBhealthcare | Verelle Hairdressing – NEW |
| | Zebra Waste Skip Hire |





It is important that Fareham maintains a balanced housing market and can keep up with the increasing demand for homes. We are committed to providing good quality housing, with a choice of tenancy lengths. Building new affordable homes for rent and low cost home ownership is a vital part of our work, and we have made it a priority to deliver 500 more affordable homes by 2017.

Meeting the Borough's housing needs

How are we going to supply different types of housing?

Part of this target will be met by securing new affordable homes on larger private developments.

We are also investing around £13m to build new council homes for the first time in a generation. In the next 3 years we plan to build around 100 new council homes, in several areas of the Borough, that meet a variety of housing needs.

This spring, Collingwood Court in Stow Crescent is due to be completed. This is a new development, providing 40 sheltered flats for people aged 60+ with support needs.

Finding a suitable home

Building new homes for older people and housing for smaller households will help to free up existing larger family sized homes. These can then be made available to larger families. Anyone interested in applying for the new council homes or any other affordable rented housing in the Borough should contact the Housing Needs Service on **01329 236100**.

A proportion of the affordable homes

we deliver in partnership with private developers and housing associations, will be available for Low Cost Home Ownership. These homes allow people to get on to the housing ladder by buying part of a home from a housing association whilst paying rent on the rest. All low cost home ownership properties are advertised online at www.helptobuysouth.co.uk

Future plans

- 36 x 1 and 2 bedroom sheltered flats at Coldeast in Park Gate
- 16 x 1 bedroom flats for general needs in Fareham town centre
- 6 x family homes in Sarisbury, which will showcase the energy efficient Passivhaus building approach to be incorporated at Welborne.





Calling all landlords!

Landlords, did you know you can get guaranteed rent by letting your property through our new not for profit letting agency, **FareLets**? We're looking for anything from studio flats, to 3 bedroom houses in Fareham or neighbouring boroughs.

The Farelets scheme offers three different levels of service:

Tenant Find Free

- Helps find suitable tenants
- Reference and credit checks to make sure tenants are suitable
- Provides a standard tenancy agreement for the landlord and tenant to sign
- Provides a deposit bond equivalent to one month's rent, which can be claimed against at the end of the tenancy
- Rent guaranteed for the first 12 months of any tenancy where tenants sign a 12 month fixed tenancy agreement

Managed Lease Set up fee of £300 for properties with gas, £200 without

- We take the property on a lease and sublet directly to those in housing need
- Guaranteed monthly rental income for the whole term of the lease
- We organise and pay for gas and electrical certificates on expiry
- We guarantee to return the property to the landlord in the same condition as it was taken on (excluding fair wear and tear)
- Tenancy management service
- All the landlord needs to do is organise and pay for any maintenance at the property

Full Management 8% + VAT of the monthly rental income

- All the services included with Tenant Find, PLUS
- Tenancy management
- We organise and pay for gas and electrical certificates when they expire
- We manage any repair or maintenance works and pay costs up to £150 per year
- We pay up to £100 of the excess for any insurance claims resulting from damage caused by the tenant

As well as the above benefits, landlords who let through the Council, will also be helping someone in urgent housing need, as the tenants we provide are waiting for new homes. To find out more about letting a property with FareLets please contact our Accommodation Officer, **01329 824649**



Celebrating 20 years of Fareham in Bloom

2015 will see the twentieth year of **Fareham in Bloom**. From humble beginnings, forged from a relationship between a dedicated group of volunteers and the Council, the initiative has become one of the biggest and most respected in the south of England.

Thousands of people come into contact with the work of the 'in bloom' team and the Council's grounds maintenance department, whether it be attending events, opening their own gardens for charity, or entering the community gardening challenge. The benefits can be clearly seen as you travel through the Borough with its attractive landscaping and floral displays.

Last year the Borough received nine gold level awards from the regional South and Southeast England in Bloom, the first time this has been achieved in all the categories that were entered.

Such success is the result of true passion and dedication by all those involved and we would like to thank everyone who has supported the initiative since 1996.



Let's get gardening

We have become well known for our public floral displays and hanging baskets. For 2015 the colour theme will be 'Some Like it Hot' with the emphasis on bright rich colours in pinks and purples against orange, red and yellow shades.

To perfect your own floral display and create your own beautiful basket there will be a free workshop at St Margaret's Nurseries, Titchfield 10am – 1pm on Saturday 16 May. The first 100 people to attend will receive a free Fuchsia plant.





Going even wilder

Three years ago we started the Going Wild initiative to bring wild flower meadows across the Borough. We are continuing to develop new sites, the latest having been sown at Stubbington Paddock and another planned for Portchester Park in April.

To get our community sowing wild flowers in their own gardens there will be two events. The first on 16 March 9am – 4pm at Fareham Shopping Centre, where there will be a launch of 5,000 free seed cards, generously sponsored by the centre to mark 20 years of Fareham in Bloom.

There will then be a free workshop held at the open space on Hillson Drive, North Fareham at 1pm on Thursday 9 April where a horticulturist will be on hand to demonstrate the sowing of a meadow.

The Community Gardening Challenge

Community participation has always played a key part in Fareham in Bloom, and the community gardening competition is at the heart of this.

Over the years we have seen many outstanding gardens and we would love to see even more.

This year, the competition has had a mini makeover, and has been renamed the Community Gardening Challenge. Open to all residents, schools and businesses within the Borough, entries are judged during the second two weeks of July. The awards, Bronze, Silver, Silver Gilt, and Gold are based on individual merit and are therefore not competitive. To take part simply complete and return the application form, no later than Sunday 14 June.

COMMUNITY GARDENING CHALLENGE 2015

Please print in CAPITALS

Name/Organisation

Address

Postcode

Contact tel no.

Email

Allotment site (if applicable)

Plot number

Entries must be within the Borough of Fareham and visible from the front or side (except sections 3, 4, 5 & 6). You may enter a maximum of four categories in sections 1 – 4 or one category from sections 5 & 6.

Section 1

- 1a Small floral front garden under 70m2
- 1b Large floral front garden over 70m2
- 1c Courtyard or forecourt style garden
- 1d Plantsman's front garden – mainly perennial

Section 2

- 2 Container – a single planter, hanging or wall basket
- 3 Floral display, incl. balconies – using any baskets / containers
- 4 Garden feature – topical theme or innovative or amusing design

Section 3

- 5a Small floral back garden under 100m2
- 5b Large floral back garden over 100m2
- 5c Small plantsman's back garden under 100m2– mainly perennials
- 5d Large plantsman's back garden over 100m2– mainly perennials

Section 4

- 6 Wildlife garden – specifically designed for the benefit of wildlife

Section 5

- 7a Allotment garden up to 5 rods
- 7b Allotment garden over 5 rods
- 7c Best kept allotment site

Section 6

- 8a Council provided sheltered housing or day care facilities
- 8b Privately provided sheltered housing or day care facilities
- 9 Shop fronts, business premises and public houses
- 10 Business parks and commercial landscapes
- 11 Community gardens – including streets, community centres and volunteer groups
- 12 Schools gardening projects – including childcare facilities

Return to: Fareham Borough Council, Parks and Open Spaces, Civic Office, Civic Way, Fareham PO16 7AZ by 14 June 2015

Photos may be taken at these events for promotional purposes and we need your permission to use them, either in our publications or on our website. Please sign here if this is acceptable.

Thank you

The personal information you provide will be treated with the strictest confidence and held for a period of no more than five years for the purpose of these activities, promotion of related events and the mailing of associated material. Should you not wish to receive such information, then please tick here

DECISION EXPECTED ON WELBORNE PLAN

A decision by government inspector, David Hogger, on our Welborne Plan is expected in the next few weeks.

Mr Hogger had been considering the plan and a number of changes (known as Main Modifications) that he had requested since holding an examination in public at the end of 2014.

The Council had expected Mr Hogger to request changes to the original plan that had been subjected to examination in public.

Mr Hogger asked for the changes to be made before he decides if the Welborne Plan is 'sound' and meets with national planning policy.

A consultation on those changes – aspects of the transport and affordable housing provision, the environment, energy efficiency and the locations of the secondary school and recycling centre – was due to be completed by March 9 and the responses given to Mr Hogger for him to make his final decision on the plan.

Welborne is planned to be a major new

settlement with supporting employment, retail and infrastructure, located to the north of the M27 motorway between Fareham, Wickham, Funtley and Knowle.

Executive Member for Planning and Development, Councillor Keith Evans, said: "The main modifications requested by Mr Hogger came up in the examination in public. They were exactly what we were expecting.

"We have made the modification that were requested and have been seeking the views of the public on those modifications so we can then provide all of that evidence to Mr Hogger. We will then be looking forward to getting his final report on the plan.

"If the plan is found sound, then the Council will be able to formally adopt it and use the policies in the Welborne Plan to assess future planning applications for Welborne by site promoters."

The key elements of the new community include:

- Approximately 6,000 new homes
- 97,250m² of new employment floorspace
- A high quality place set in a green environment which builds upon garden city principles
- New district and local centres
- Significant new green infrastructure
- Substantial investment in transport, including improvements to the strategic highways network and new high-quality public transport



Would you like to meet new people, learn new skills and share your knowledge and know-how with your local community?

Could you be a community composting champion?



**LOVE
FOOD**
hate waste

Hampshire County Council is looking for volunteer 'champions' to spread the word about throwing away less food and making compost at home.

Champions will be involved in passing on tips and advice to help people make the most of the food they buy, in turn helping reduce the amount of food waste in the county.

The type of activities you could be involved in as a champion are:

- Giving talks to community groups, students and businesses.
- Going to local events to promote food and garden tips and advice.
- Leading groups in activities to show how they can reduce food waste through smart shopping, meal planning, storage and using leftovers in new recipes.
- Demonstrating how to make compost.
- Contributing to articles for websites, community newsletters and the local press.

If you are comfortable speaking to groups of people from all backgrounds and believe you could use your enthusiasm to help change their habits, this could be a great opportunity for you.

Volunteers will be asked to commit around 30 hours over a year, which could include some evenings and weekends. An interest in food and/or prior experience of home composting would be helpful but not necessary as full training will be given. You will be supported by staff and other volunteers and travel expenses will be paid. Volunteering can be a rewarding way to learn new skills, gain confidence and help with career development.

For more information email: waste.prevention@hants.gov.uk, or call Zoe Cooke on 01962 832286 or Mike Culver on 01962 846764.



Have your say



Listening to your views is essential to the Council providing better services. One of the ways we listen to residents is by holding public meetings, known as Community Action Team (CAT) meetings. CAT meetings used to take place at regular times and locations in the 5 CAT areas across the Borough. You may have been to one of these in the past to talk about topics such as Welborne.

Our research has shown that people are much more likely to go to the meetings if there is something on the agenda that has an impact on their life or local community. With this in mind, we have made some important changes to the meetings:

- Most CAT meetings will now only take place when there is a local 'hot topic' that is of interest to residents, taking place at a crunch time

- Meetings will be focused on a single main agenda item
 - Yearly summer meetings in 5 areas across the Borough will give you an opportunity to quiz the Leader, Councillor Woodward
- These changes mean that we can focus more on the issues that matter to you, when they are taking place, at a time where your views can make a difference. You can find more about the changes at www.fareham.gov.uk/cats

Community Funding

Do you have a great idea for a community project in Fareham but need some financial help? If so, the Council's Community Fund could help you with capital costs such as buying pieces of equipment. If you have a project you would like to talk about, please telephone **01329 236100** or email cats@fareham.gov.uk



Allotment Watch

Fareham Allotment Watch is a new project through which the Police and Fareham Borough Council's Community Safety

Team will be working with allotment holders and associations to improve the security of the allotment sites across the Borough. By doing so, we're aiming to reduce the rare occurrences of allotment crime such as theft and vandalism.

To find out more, contact the Community Safety team on **01329 824495**.



Have your say and help make Fareham even better

Making sure our services and policies meet your needs is a vital part of the Council's work. Listening to your views is important and you can really make a difference to life in the Borough by having your say. There are lots of ways you can get involved at www.fareham.gov.uk/have_your_say but the easiest way is to sign up for the E-Panel.

E-Panel

You can quickly join and then take part in consultations, surveys and even the occasional quiz. It's also a great way to keep up to date with what's going on in the Borough.

It only takes a minute to sign up at www.fareham.gov.uk/have_your_say/e-panel

Neighbourhood Watch

Neighbourhood Watch across the Borough is seeing a resurgence. Joining Neighbourhood Watch offers a network through which information on preventing and reporting crime is shared. Fareham Neighbourhood Watch Association produces a newsletter twice a year which is available to all scheme

members and interested parties. To

see the latest newsletter, please

go to www.fdnwa.co.uk or www.saferfareham.co.uk. If

you would like to request a paper copy, please contact the Community Safety Team on **01329 824495**.



Community Trigger – more power to you

What is the Community Trigger?

The Community Trigger empowers you to ask Fareham's Community Safety Partnership to review how we deal with cases of anti-social behaviour.

The Community Trigger has been designed to make sure that we work together to resolve complaints about anti-social behaviour.

How will we do this?

We'll talk about the problem, share information and act together to try and resolve the complaint.

The Community Trigger is to be used if you believe that there has been a failure to respond to your complaint.

The Community Trigger won't replace other organisations' own complaints procedures, and you would still have the opportunity to complain to the

Ombudsman or Independent Police Complaints Commission if you are unhappy with the outcome.

How can you use the Community Trigger?

If you have complained to Fareham Borough Council, Hampshire Constabulary and/or a Registered Housing Provider (social landlord) and/or Fareham & Gosport Clinical Commissioning Group three times about separate incidents in the last six months.

OR

If five people in the local community have complained separately to Fareham Borough Council, Hampshire Constabulary and/or a Registered Housing Provider (social landlord) and/or Fareham and Gosport Clinical Commissioning Group in

the last six months about similar cases of anti-social behaviour and all of them think that no action has been taken.

Who to contact

You can email communitytrigger@hampshire.pnn.police.uk

If you don't have access to email – please call **01329 824496** or write to the Community Safety Team, Fareham Borough Council, Civic Way, Fareham, PO16 7AZ.

You will need to give details of each time you've complained, who you've complained to (name, organisation and/or Incident Reference Number) and information about the anti-social behaviour.

If you have an on-going complaint that is being dealt with, your case is not appropriate for the Community Trigger.

STEP INTO SPRING ALONG THE POETRY PATH

Warsash Common



Warsash Common was once used for grazing up until the end of the 19th century, when the land was then used for extensive gravel extraction. The pits were eventually filled with household and commercial waste, before the site was closed and left to regenerate naturally. The Council took over the land in 1995, when the site was developed into the public open space that we enjoy today.

This walk features something a bit different; a Tree Trail and Poetry Path. Along the way, you can find out about 12 native species of trees and you will get the chance to read poems written by local school children and residents. You can download information about each tree on our website or you can scan the QR code on your phone, which will be at the entrance to the site.

As you step over the metal gate and walk along the path you will come to the first tree on the Tree Trail. Look out for the Tree Trail posts along the route as these mark where each of the trees are. On one side of the path you will see a deep gully which has formed over the years. Keep to the left of the path following the arrow that says 'Tree Trail' and you will find a large apple tree with poems in wooden frames hanging from it.

Following the Tree Trail arrow along the path to the left, you will come to a huge open space which is home to around 17 different species of wildflower. This beautiful area gives a peaceful, relaxing vibe. Along this route you will find the first of 6 Poetry Posts, along with a bench if you need a little rest, and a few more trees that feature on the Tree Trail. Follow the path and the arrow for the Tree Trail, which will take you onto the track. As you walk along here, keep an eye out for the badger setts on your right in the bank.

You will eventually reach the wet woodland area, home to mainly Alder trees. There is something quite magical about this area, with tall trees, a small, trickling stream and a wooden bridge to cross. Look out for the Nuthatch bird which can sometimes be seen by the water and in the trees. You will eventually come to a set of steep steps. Be careful going down these as they might be a bit slippery if wet. Following the path to the left you will see another set of steps, which you need to walk up.

At the top, turn left through a small gap in the fence and then turn right onto the track, again following the Tree Trail arrow. You will see an apple tree on your right, which produces delicious, sweet apples.

Around this area you will often find the Black Adder, Common Adder, Slow Worms and Grass-snakes in the warmer months.

Follow the boardwalk to your left. As you walk along here you will see the beautiful seasonal ponds which are home to a range of wildlife. Go up the steps and bear left, which will take you onto a meadow. Walking along the path, you will come to the second poetry tree with a set of poems hanging from it.

Soon enough you will reach Dibbles pond, a beautiful, calm area. If you come early enough in the morning you may spot a Kingfisher, or if you come at dusk you may hear the Tawny Owl.

Walk along the path and you will eventually find yourself back at the apple tree. Go to the end of the path and then turn left onto the track and follow the path back to the starting point.

If you would like your poem to be featured on the Poetry Path please email it to countryside@fareham.gov.uk

The theme for the poems should be based on the natural environment. They are changed once a month, so yours could be featured at any point throughout the year.

To download the Tree Trail information please visit www.fareham.gov.uk/thetreerail



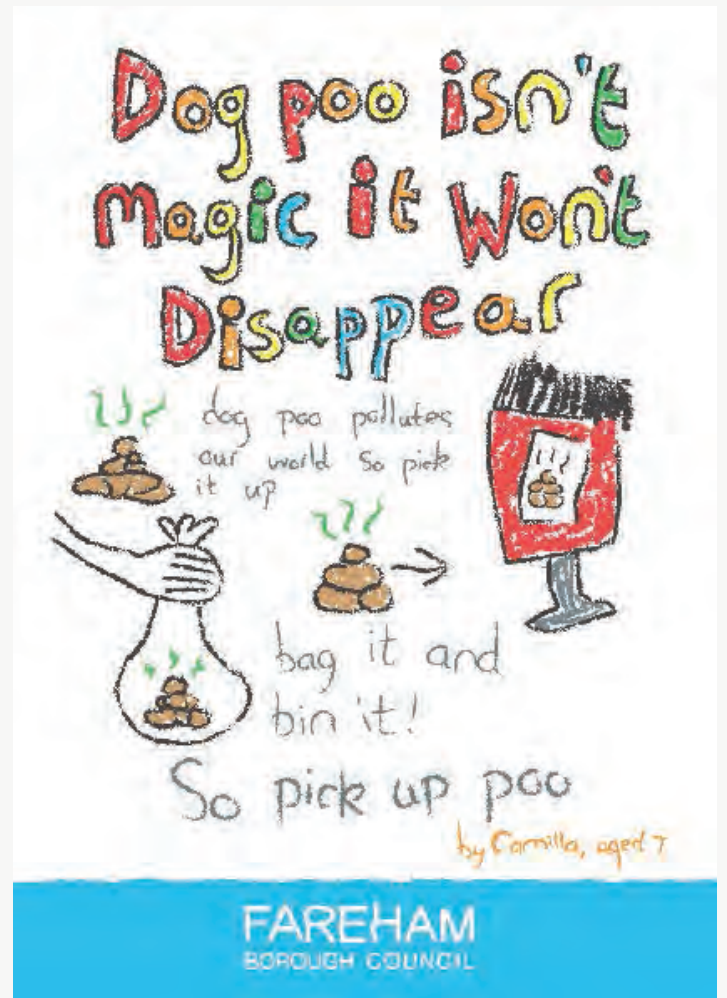
Walk duration
1 hour – 1 hour 30 minutes (approx.)

Important information

- Various seating areas
- No toilets
- Parking at the bottom of New Road, off Dibles Road
- Nearest refreshments: The Jolly Farmer, Fleet End Road and The Village Baker, Warsash Road
- Some areas may be difficult for pushchairs/wheelchairs



Camilla dishes the dirt on dog poo!



Here at Fareham Borough Council we always welcome suggestions, comments or ideas from residents, old, or in this case, very young. 7 year old Camilla Ellwood wrote to us recently highlighting the problem of dog mess. She sent us a poster she had drawn encouraging owners to clean up after their dogs. We liked Camilla's poster so much we decided to get it made up into signs to display around the Borough. With the help of a designer, the poster is now in all 42 of our notice boards as well on some lampposts and at various local parks.

Camilla told us: "It makes my mummy and daddy very cross when people don't pick it up. If you leave it it's horrible for everyone. Sometimes we see it on the pavement on our walk to school. It was raining a lot in half term so I thought I'd do a poster about it and send it to the Council. It's really exciting to see my poster up in parks and things!"

Executive Member for Streetscene, Cllr Leslie Keeble, said: "Thankfully most dog owners do the right thing and clean up after their dogs. However when people don't, not only does it ruin open spaces, it's also a health hazard. It's good to see residents as young as Camilla showing community awareness – hopefully her poster will encourage the minority of dog owners concerned to be more considerate and pick up the poo!"

Our enforcement team can issue a £75 on the spot fine, known as a fixed penalty notice, if they see someone not cleaning up after their dog. There is the possibility of prosecution and a fine of up to £2,500 if the original fine isn't paid.

As a thank you for her hard work, Camilla was presented with a family ticket to the panto at Ferneham Hall, which she received in the Mayor's parlour. She was also given a framed copy of her poster, well done Camilla!



ferneham hall What's On

Details may be subject to change. For a full list of what's on and how to book your seats, contact the Box Office on **01329 231942** or email boxoffice@fareham.gov.uk.

March

Wall of Floyd – Tribute Show

Saturday 7 March, 7.30pm £15 – £18

Laughter Live! – Comedy Club

Friday 13 March, 7.30pm £10 – £12

Oliver! – Fareham Musical Society

Tuesday 17 – Saturday 21 March, 7.30pm
(Sat matinee 2.30pm) £10.50 – £14

Sparkle with The Stars – Dance Show

Sunday 22 March, 1.00pm & 3.15pm
£6.50 – £11

Swan Lake – Moscow Ballet

Wednesday 25 March, 7.30pm £19 – £23

The Manfreds

Thursday 26 March, 7.30pm £19.50

Mayor's Annual Charity Ball

Friday 27 March, 7.30pm

April

Dance Festival

Sunday 5 April – Saturday 11 April
(various times)

Gosport Gang Show

Wednesday 15 – Saturday 18 April
(various times) £9 – £12

How the Koala Learnt to Hug – Children's Show

Sunday 19 April, 2.30pm £8 – £9.50

Sunshine On Leith – South Downe Musical Society

Thursday 23 – Saturday 25 April, 7.30pm
(Sat matinee, 2.30pm) £10 – £14.50

Open Mic

Sunday 26 April (various times)



Visit fernehamhall.co.uk or follow us on twitter @FernehamHall

May

Laura Dunkley Dance School presents Alice In Wonderland

Friday 1 May 7.00pm and Saturday 2 May, 1.00pm & 6.30pm £9.50 – £12.00

SNAP Dance Night

Friday 8 May, 7.00pm – 10.30pm £6

Small Town Band – Rotary Club of Whiteley

Saturday 9 May, 7.30pm

Pasha, A Life Through Dance – Strictly Winner

Sunday 10 May, 7.30pm £23 – £25

HADOS – Orchestra

Saturday 16 May, 7.30pm £1 – £20

Singalonga Frozen

Sunday 17 May, 2.30pm £10 – £15

Singalonga Sound of Music

Sunday 17 May, 7.00pm £13.50 – £15

Sally Morgan

Monday 18 May, 7.30pm £23 – £24

A Vision of Elvis

Friday 22 May, 7.30pm £15 – £20

All England Dance Festival

Saturday 23 May – Sunday 31 May
(various times)

June

Ladyboys of Bangkok

Tuesday 2 June, 7.30pm

Laughter Live! Comedy Club

Friday 5 June, 7.30pm

Open Mic

Saturday 6 June (various times)

Fawlty Towers – Fareham Musical Society

Thursday 11 June – Saturday 13 June, 8.00pm £11 – £13

Ministry of Science

Sunday 14 June, 2.30pm

The Drifters – Rebranded Tour

Friday 19 June, 7.30pm £25 – £26

Hampshire Police Choir – Concert

Saturday 20 June, 7.30pm £14

Pulse Dance and Fitness Academy

Sunday 21 June, 2.30pm

The Bon Jovi Experience

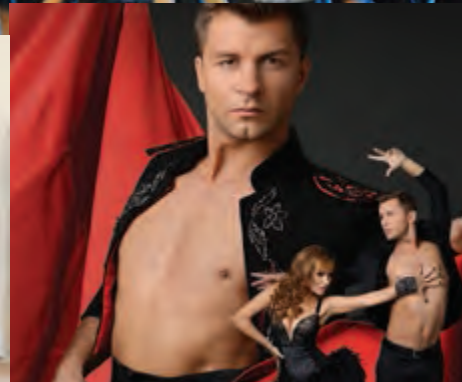
Friday 26 June, 7.30pm £15 – £17.50

In Time School of Dance

Saturday 27 June, 5.30pm

Baby Ballet Chichester

Sunday 28 June

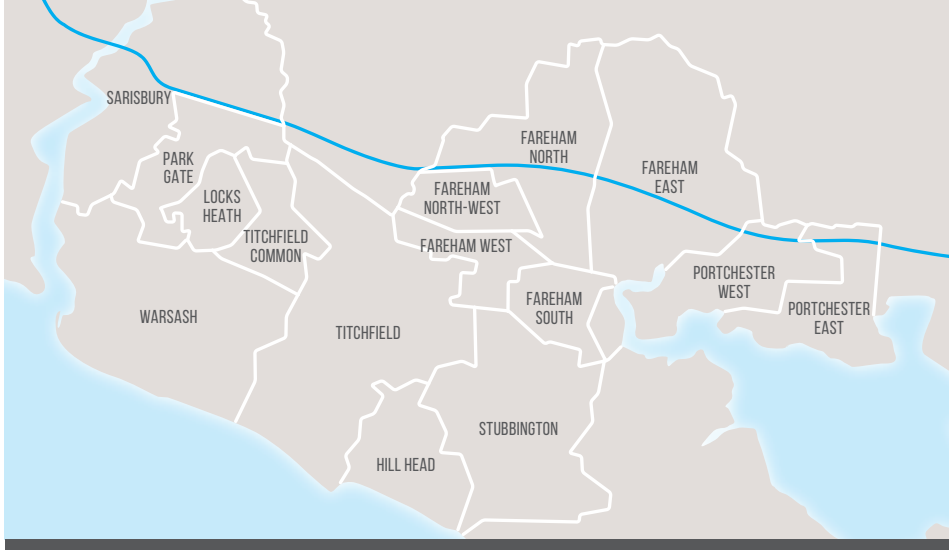


YOUR COUNCILLORS



Conservative
Liberal Democrat
Independent
UKIP

Fareham Council email is name@fareham.gov.uk



Fareham North West Ward

David Whittingham
2 Hammond Road
Fareham
PO15 6PT
01329 515329
dwhittingham@

Peter Davies
142 Highlands Road
Fareham
PO15 5PS
01329 846239
pdavies@

Fareham South Ward

Trevor Howard
44 Southampton Road
Fareham
PO16 7DY
01329 281510
thoward@

Dennis Steadman
77 Mill Road
Fareham
PO16 0TP
01329 285667
dsteadman@

Fareham West Ward

Nick Gregory
81 Abbey Road
Fareham
PO15 5HW
01329 843329
ngregory@

Leslie Keeble
173b Highlands Road
Fareham
PO15 5PR
01329 845339
lkeeble@

Fareham East Ward

Katrina Trott
21 Furzehall Avenue
Fareham
PO16 8UD
01329 310389
ktrott@

Paul Whittle
20 Coghlan Close
Fareham
PO16 7YF
01329 826067
pwhittle@

Fareham North Ward

John Bryant
14 Highlands Road
Fareham
PO16 7XL
01329 281427
cllbryant@

Pamela Bryant
14 Highlands Road
Fareham
PO16 7XL
01329 281427
cllbryant@

Locks Heath Ward

Keith Evans
94 Abshot Road
Fareham
PO14 4NH
01489 582450
kevans@

Susan Bayford
6 Abshot Manor
Little Abshot Road
Titchfield PO14 4LN
01489 577772
sbayford@

Park Gate Ward

Marian Ellerton
230 Botley Road
Burridge
SO31 1BL
01489 570774
mellerton@

Brian Bayford
6 Abshot Manor
Little Abshot Road
Titchfield PO14 4LN
01489 577772
bbayford@

Sarisbury Ward

David Swanbrow
7 Mulberry Lane
Sarisbury
SO31 7LJ
01489 572723
dswanbrow@

Seán Woodward
8 Persian Drive
Whiteley
PO15 7BJ
01489 881030
swoodward@

Warsash Ward

Michael Ford
14 Shellcroft
Warsash
SO31 9BL
01489 574501
mford@

Trevor Cartwright
52 Yarrow Way
Warsash
SO31 6XD
01489 578519
tcartwright@

Titchfield Common Ward



Sarah Pankhurst
c/o Civic Offices
Civic Way
Fareham
PO16 7AZ
01489 881362
spankhurst@



Jack Englefield
1 Lower Church Road
Titchfield Common
PO14 4PW
01489 583284
jenglefield@

Titchfield Ward



Tiffany Harper
20 Hampton Grove
Catisfield
PO15 5NL
01329 844074
tharper@



Connie Hockley
27 Heath Lawns
Catisfield
PO15 5QB
01329 287365
chockley@

Hill Head Ward



Tim Knight
Quarry House
Salterns Road
Hill Head PO13 9NL
01329 662383
tknight@



Arthur Mandry
76 Crofton Lane
Hill Head
PO14 3QE
01329 317923
amandry@

Stubbington Ward



Kay Mandry
76 Crofton Lane
Hill Head
PO14 3QE
01329 317923
kmandry@



Christopher Wood
16 Conqueror Way
Stubbington
PO14 2SD
07807 954788
cwood@

Portchester West Ward



Nick Walker
Turret House
Hospital Lane
Portchester PO16 9LT
02392 384943
nwalker@



Susan Bell
Turret House
Hospital Lane
Portchester PO16 9LT
02392 384943
sbell@

Portchester East Ward



David Norris MAYOR
27 Westlands Grove
Portchester
PO16 9AE
02392 614257
dnorris@



Roger Price
49 Sissinghurst Road
Portchester
PO16 9YB
01329 280446
rprice@



Geoff Fazackarley
22 Marlborough Grove
Portchester
PO16 9RU
07872 623221
gfazackarley@

MP for Fareham



Mark Hoban MP
House of Commons
London SW1A 0AA
020 7219 3000
mail@markhoban.com

MP for Gosport plus Hillhead and Stubbington



Caroline Dinenage MP
House of Commons
London SW1A 0AA
020 7219 3000
caroline.dinenage.
mp@parliament.uk

County Councillors

County Council email is name@hants.gov.uk



Fareham Town
Peter Latham
Posbrook Gardens
Titchfield
PO14 4HD
01329 843267
peter.latham@



Fareham Town
George Ringrow
11 Sutton Court
Fareham
PO14 1FH
01329 822823
george.ringrow@



Warsash
Keith Evans
94 Abshot Road
Fareham
PO14 4NH
01489 582450
keith.evans@



Titchfield
Geoff Hockley
27 Heath Lawns
Catisfield
PO15 5QB
01329 287365
geoff.hockley@



Sarisbury
Seán Woodward
8 Persian Drive
Whiteley
PO15 7BJ
01489 881030
seán.woodward@



Crofton
Christopher Wood
16 Conqueror Way
Stubbington
PO14 2SD
07807 954788
christopher.wood@



Portchester
Roger Price
49 Sissinghurst Road
Portchester
PO16 9YB
01329 280446
roger.price@

Can your child swim?

ZOGGS

ASA
FACILITY
OPERATOR OF
THE YEAR
2014

WHY CHOOSE EVERYONE ACTIVE SWIMMING LESSONS?

NO WAITING

New spaces now available

START YOUNG

Learn from 4 months old

HIGH QUALITY

Teachers ASA qualified

FLEXIBLE CHOICE

7 days a week, 50 weeks a year

LOW COST

Monthly payments as low as £23

NEW... PARENT AND BABY CLASSES NOW AVAILABLE

Fareham Leisure Centre

01329 233652

FAREHAM
BOROUGH COUNCIL

Everyone Active manages this facility in partnership with Fareham Borough Council.

SPACES
AVAILABLE
Now!

everyone
ACTIVE

Feel better for it

 everyoneactive.com

 eaFareham

 @eaFareham